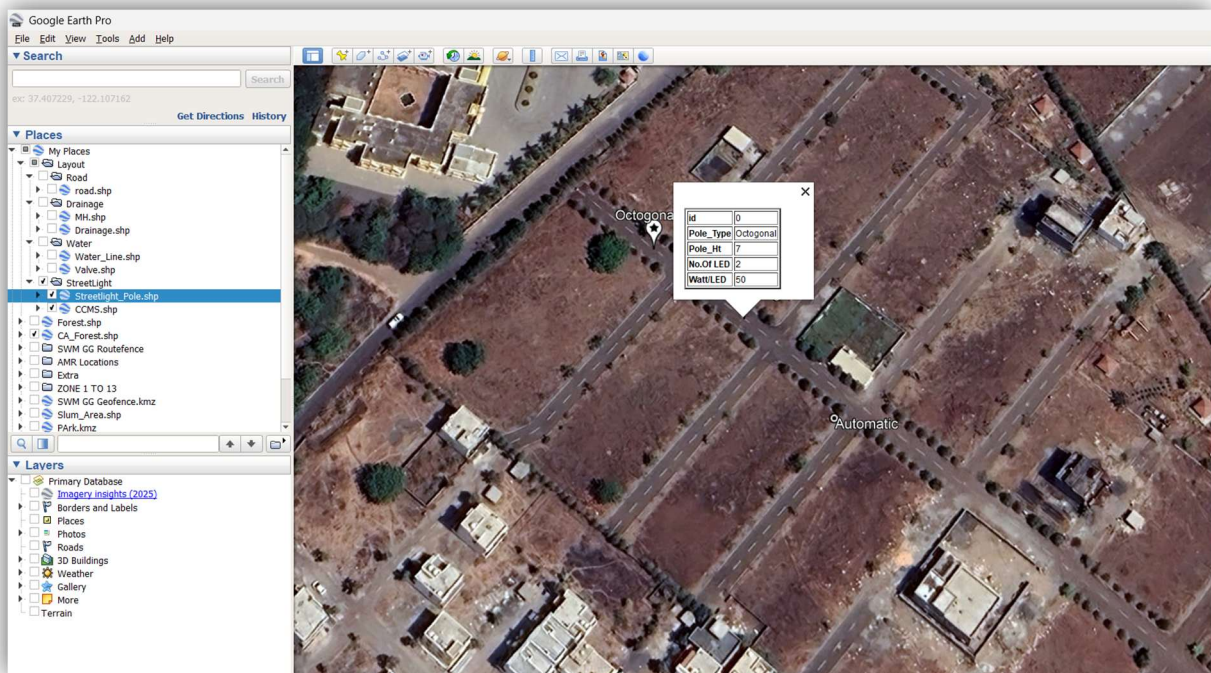


Guideline for KML file Creation

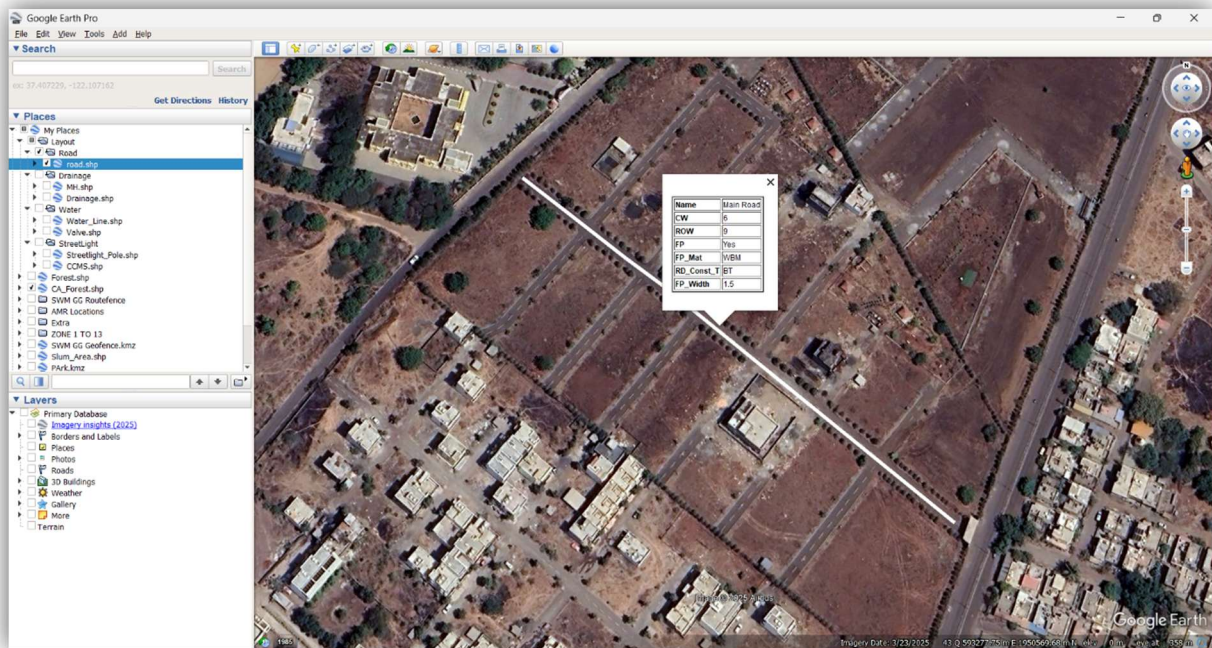
1. Street-Light Pole & Control Panel

- Street Light Pole and Control Panel should be shown in point feature on Map w.r.t. its exact location.
- It should have following attribute data linked with each point. And Visualize as shown in figure below
 - **For Street Light Control Panel**
 - **Type of Control Panel – Automatic/Manual**
 - **Phase – 3Ph**
 - **For Street Light Pole**
 - **Pole Type – e.g. Octagonal, RSJ.**
 - **Pole Height**
 - **No. LEDs – e.g. 1, 2**
 - **Watt per LED – 25 w, 50w ...**



2. Road

- The road line should be mark on the center of the road.
- It should have following attribute data linked with each point. And Visualize as shown in figure below
 - Road Name – e.g. Main Road/Lane 1....
 - Carriageway Width
 - Right of Way
 - Construction Material
 - Footpath – Yes/No
 - Footpath Width
 - Footpath Material



3. Drainage Line

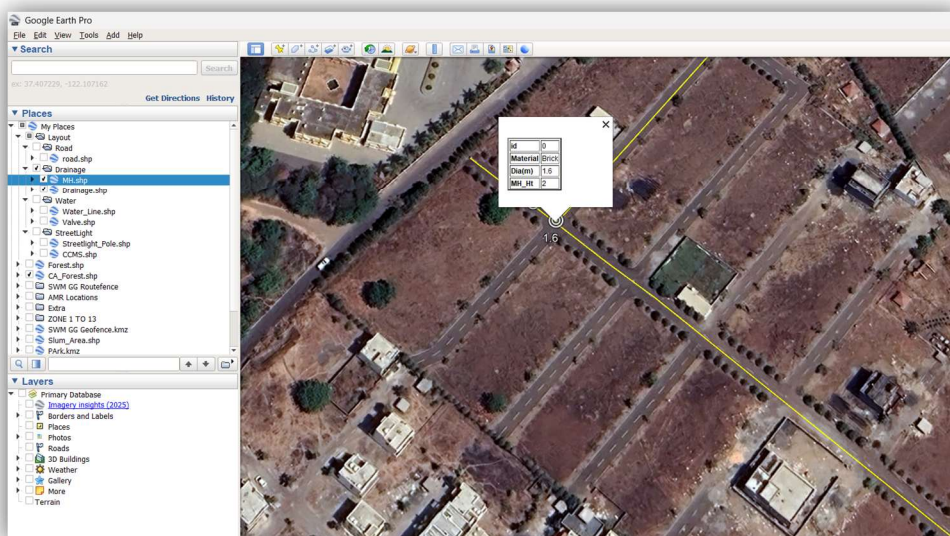
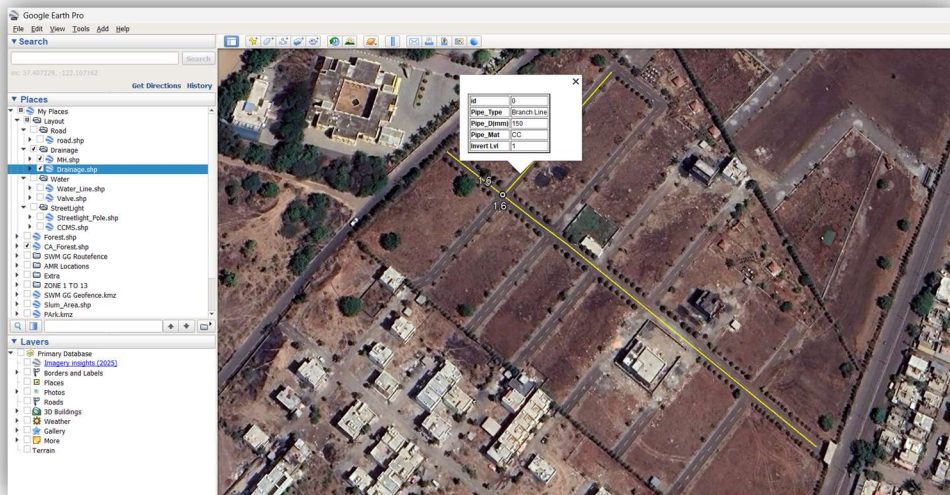
- The Drainage Line line should be mark on the center of the road or from where it is proposed and the Manhole chambers should be lies on to the drainage line
- It should have following attribute data linked with each point. And Visualize as shown in figure below

- **Drainage Line**

- **Pipeline Type**
- **Pipeline Material**
- **Pipeline Diameter (mm)**
- **Invert Level (M)**

- **Manhole Chamber**

- **Chamber Construction Type – Brick masonry / Concrete**
- **Chamber Diameter (M)**
- **Chamber Height(M)**



4. Water Line

- The Drainage Line should be mark on the shoulders of the road or from where it is proposed and the Valves should be lies on to edge of the Water line.
- It should have following attribute data linked with each point. And Visualize as shown in figure below.
 - **Drainage Line**
 - **Pipeline Type**
 - **Pipeline Material**
 - **Pipeline Diameter (mm)**
 - **Valve**
 - **Valve Operating – Automatic/Manual**
 - **Valve Diameter (mm)**

